

DC High Power charging cable and CCS-2 Connector Purwil Connect 850 Cooled



DC charging cable with CCS-2 vehicle connector installed. assembled cable end.
Cable based on EN 50620, connector/system based on IEC 62196-3-1

Your Benefits:

- ✓ Admissible currents up to 850A and rated voltage up to 1000V DC
- ✓ Biodegradable and environmentally friendly cooling liquid, (>60% acc OECD 301F)
- ✓ Easily replaceable DC/PE Contacts and front housing
- ✓ Extreme cable flexibility and optimal system handling
- ✓ Designed to resist high impacts and stresses
- ✓ Connector and cable developed and manufactured by Brugg eConnect
- ✓ Customized length and assembled cable end (Plug & Play)
- ✓ Power and signal contacts silver-plated
- ✓ The system is offered with the right cooling unit for your application

Product definition:

Charging standard	CCS Type 2
Cable based on	DIN EN 50620
Connector based on	IEC 62196-3
System based on	DTS: IEC/TS 62196-3-1
Part No. for 4m Cable length	560'862
Part No. for 5m Cable length	560'863
Part No. for 6m Cable length	560'864
Part No. for Cooling liquid	561'257
Cable end	Plug & Play

Technical Data System:

Rated Current of system	Up to 850A *
Rated voltage of system	1000V DC
Maximum charging power	850KW
Resistant coding	1500Ω (between PE and PP)
Ambient temperature (operation)	(-35...+50°C) **
Temperature monitoring	4 x Pt 1000
DC/PE contacts	Possible to replace (screwed)
Insertion/withdrawal force	< 100 N
Insertion/withdrawal cycles	>10.000 (can be extended if DC/PE contacts are replaced)

*Depending of the cooling unit type

**depending of the cooling unit type and coolant mixture

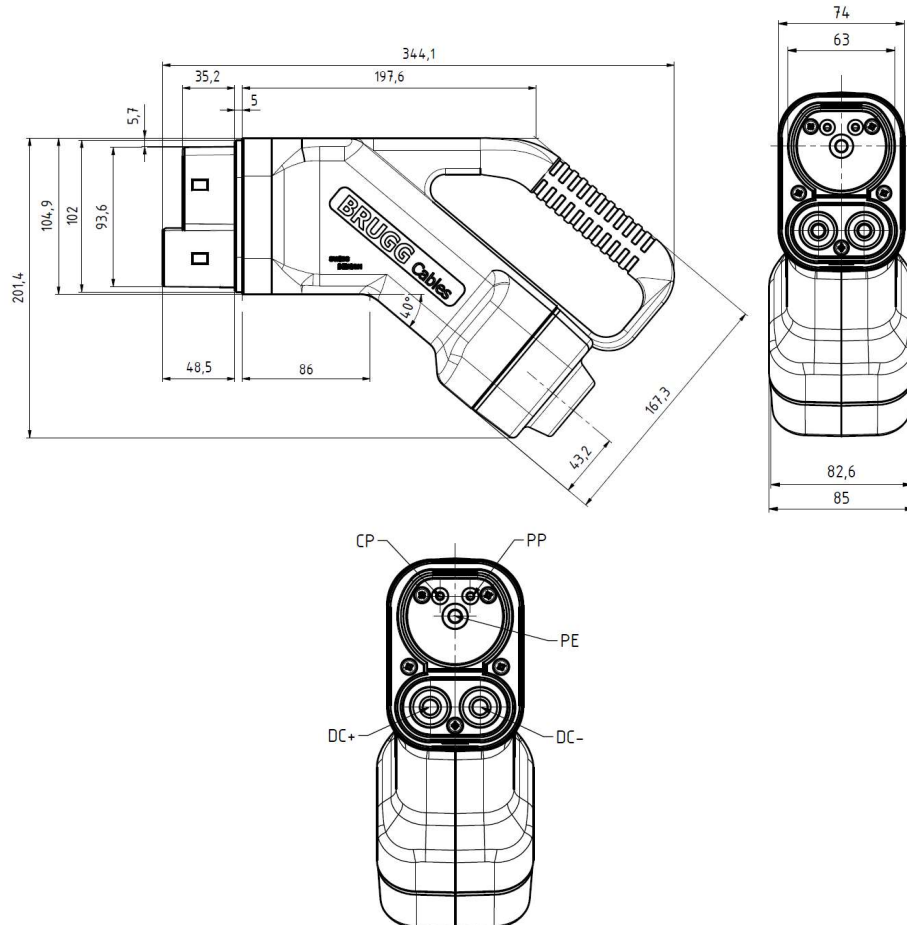
Technical Data Cable:

Cross-section	2x35 +1G35 + 8x0.75 mm ²
Diameter	35 ± 0.3 mm
Temperature range	-35°C +90°C
Weight	1.5kg/m

Operation conditions of thermal management system:

Maximum temperature of coolant (in system)	85°C
Working pressure	1...2 bar
Maximum allowed pressure	4 bar
Type of coolant	Water based
Flow rate	0...3 l/min

Dimensional data:



Pin distribution, CCS-2 Connector

Temperature sensors: 2xPt1000 on female pins DC+ (3-4) and DC- (7-8) , 2xPt1000 on contacts DC+ (1-2) and DC- (5-6)

- Further data can be provided on request.

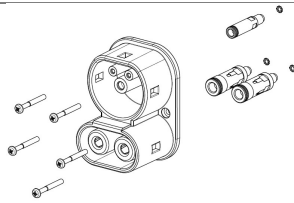
Safety information:

- Make sure that the CCS-2 plug is properly located in the charging station in order to avoid impacts, drive overs or any situation which could compromise the usability of the system. In case of any fissure or defect in the structure of the cable or connector, the system usability will be compromised therefore needs to be changed.
- For 850A and at a distance of 3 cm from the cable surface, the static magnetic field calculated has a theoretical value of 1.3 mT.
A static magnetic field does not suppose any danger for humans or animals if they don't have active implants.
- If you intend to use a cooling liquid other than the proposed for us, a material compatibility validation is required.

- Our cables are designed with enhanced flexibility, and the direct contact with soil should be avoided. If contact with soil is not possible

Accessories:

Reparation Set



Reparation Set- CCS2-E-Connect D-E-FH – **561081**

Mounting instructions, 2 units exchangeable DC pins, 1-unit Earth pin, 3 units Serrated lock washer, 4 units sealing rings, 2 shrinking tubes, 5 units screw M4x35 and 1 unit reinforced front housing.



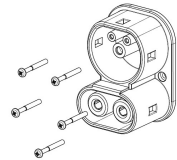
Reparation Set- CCS2-E-Connect D – **561082**

Mounting instructions, 2 units exchangeable DC pins, 2 shrinking tubes, 2 units Serrated lock washer, 2 units sealing rings



Reparation Set- CCS2-E-Connect E – **561083**

Mounting instructions, 1 unit Earth pin, 1 nit Serrated lock washer, 1 unit sealing ring



Reparation Set- CCS2-E-Connect FH – **561084**

5 units screw M4x35, 1 unit reinforced front housing, 1-unit sealing ring.

Wear resistant sleeve:



Black Polyester PET Braided Sleeving Operation temperature **-50°C/+150**

- **561085**- DC EMC Accessory, Flexible wear resistant sleeve 4m, Halogen free
- **561086**- DC EMC Accessory, Flexible wear resistant sleeve 5m, Halogen free
- **561087**- DC EMC Accessory, Flexible wear resistant sleeve 6m, Halogen free